

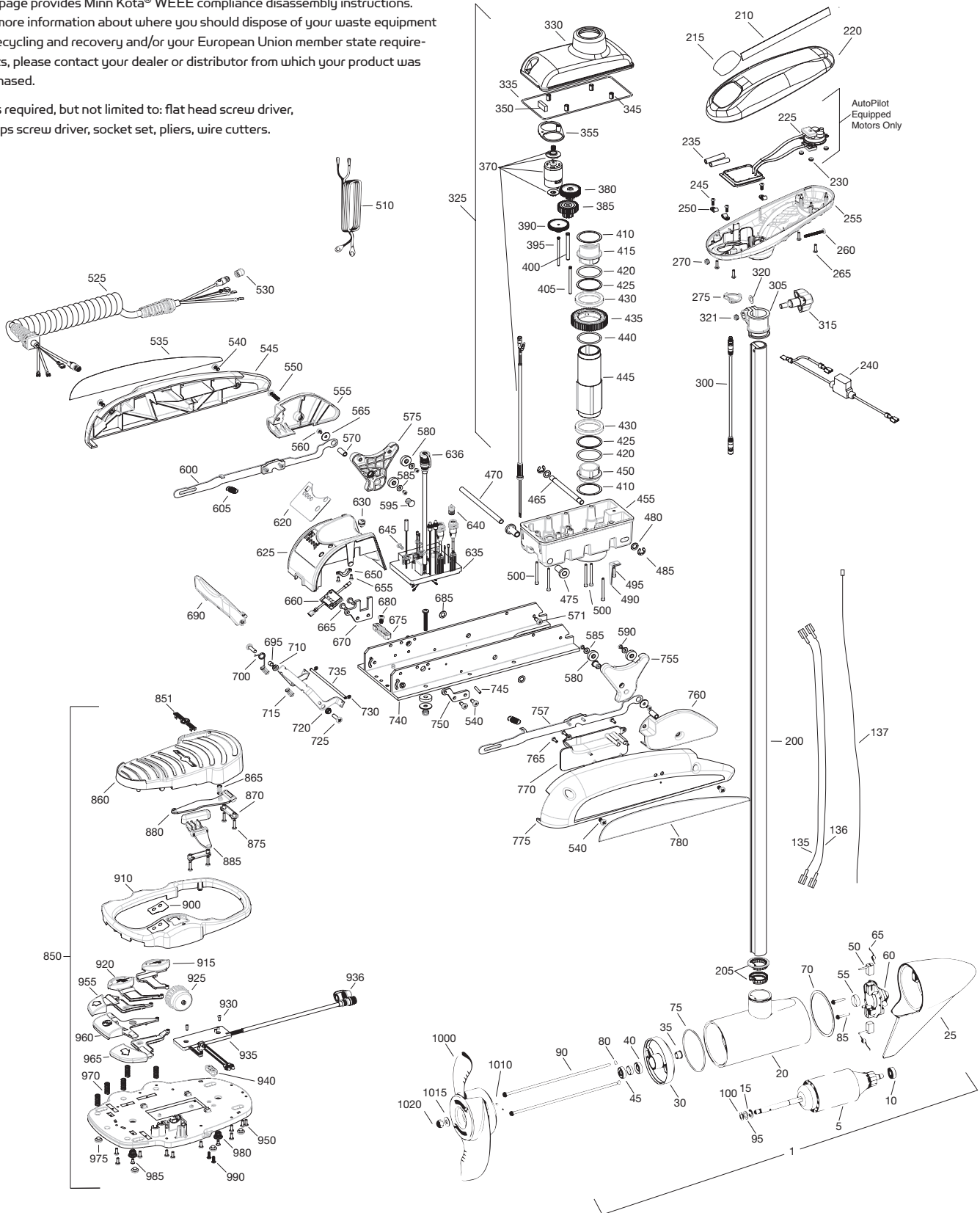
PARTS DIAGRAM

TERROVA 55

55 LBS THRUST - 12 VOLT - 45"/48"/54" SHAFT

This page provides Minn Kota® WEEE compliance disassembly instructions. For more information about where you should dispose of your waste equipment for recycling and recovery and/or your European Union member state requirements, please contact your dealer or distributor from which your product was purchased.

Tools required, but not limited to: flat head screw driver, Phillips screw driver, socket set, pliers, wire cutters.



PARTS LIST

TERROVA 55

55 LBS THRUST - 12 VOLT - 45"/48"/54" SHAFT

ITEM	QTY	PART NUMBER	DESCRIPTION
1	1	2779021	12V MOTOR 54" FW
	1	2779020	12V MOTOR 48" FW
	1	2779023	12V MOTOR US2 54"
	1	2779022	12V MOTOR US2 48"
	1	2779029	12V MOTOR US2 45"
5	1	2-100-146	ARMATURE ASSEMBLY
10	1	140-010	BEARING
15	1	788-015	RETAINING RING
20			INCLUDED IN #200 ASSY
25	1	421-050	BRUSH END HOUSING ASSEMBLY STD
	1	9421-146	BRUSH END HOUSING US2 54"
	1	9421-145	BRUSH END HOUSING US2 48"
30	1	2-400-101	PLAIN END HOUSING ASSY
35	1	144-049	FLANGE BEARING
40	1	880-003	SEAL
45	1	880-006	SEAL W/SHIELD
50	2	188-036	BRUSH
55	1	725-050	PAPER TUBE
60	1	738-036	BRUSH PLATE ASSEMBLY
65	2	975-040	BRUSH SPRING
70	1	337-036	GASKET
75	1	701-081	O-RING – MOTOR
80	2	701-008	O-RING – THRU-BOLT
85	2	830-007	SCREW, 8-32
90	2	830-008	THRU-BOLT
95	2	990-067	WASHER – STEEL
100	2	990-070	WASHER – NYLATRON
135	1	640-031	LEADWIRE – BLACK
136	1	640-135	LEADWIRE – RED
137	1	640-316	GROUNDWIRE – BROWN, US2 ONLY
200	1	2779105	TUBE – COMPOSITE 54" FW
205			INCLUDED IN #200 ASSY
210	2	2325665	DECAL, COVER
215	1	2325670	DECAL, CTRL BOX 55
	1	2325671	DECAL, CTRL BOX 55 US2
	1	2325672	DECAL, CTRL BOX 55 AUTOPILOT
	1	2325673	DECAL, CTRL BOX 55 AUTOPILOT & US2
220	1	2320200	COVER, CTRL BOX
225	1	2324032	CTRL BOARD, COMPASS, AUTOPILOT ONLY
230	3	2302960	GROMMET, COMPASS, AUTOPILOT ONLY
235	2	2065400	WIRE INSULATOR
240	1	2218200	FUSE HOLDER – US2 ONLY
245	3	2372100	SCREW, 8-18 X .625
250	3	2052510	CABLE CLAMP
255	1	2322500	CTRL BOX
260	1	2332102	SCREW, 10-24
265	4	2372100	SCREW, 8-18 X .625
270	1	2333101	NUT, 10-24
275	1	2224700	PLUG, CTRL BOX, US2 - SMALL HOLE
	1	2224702	PLUG, CTRL BOX - NO HOLE

ITEM	QTY	PART NUMBER	DESCRIPTION
	1	2224704	PLUG, CTRL BOX - LARGE HOLE
300	1	2211415	UNIVERSAL SONAR 2 EXTENSION CABLE
305	1	2771500	DEPTH COLLAR ASSY
315	1	2260906	KNOB (INCLUDED IN #305)
320	1	2321706	WASHER (INCLUDED IN #305)
321	1	2323102	NUT (INCLUDED IN #305)
325	1	2997050	STEERING HOUSING
330	1	2326501	STEERING HOUSING TOP
335	1	2324604	O-RING, CASE SEAL
345	4	2305605	ROLL PIN 5/16
350	1	2308601	BREATHER, FILTER
355	1	2328610	CRADLE, MOTOR
370	1	2777055	MOTOR, STEERING, ASSY
380	1	2302255	GEAR, CLUSTER 3RD STAGE
385	1	2302250	GEAR, CLUSTER 2ND STAGE
390	1	2302245	GEAR, CLUSTER 1ST STAGE
395	1	2302610	SHAFT, GEAR 1ST STAGE
400	1	2302620	SHAFT, GEAR 3RD STAGE
405	1	2302615	SHAFT, GEAR 2ND STAGE
410	2	2321704	WASHER – THRUST
415	1	2321515	LINER – OUTPUT TUBE
420	2	2324608	O-RING – 224
425	2	2321720	SHIM – O-RING
430	2	2327308	BEARING, BALL SEALED
435	1	2322200	GEAR – OUTPUT
440	1	2324601	O-RING – OUTPUT GEAR
445	1	2322030	TUBE – OUTPUT MACHINED
450	1	2321510	COLLAR DRIVE, BOTTOM
455	1	2326506	STEERING HOUSING – BOTTOM
465	1	2322600	PIN, LATCH, ZP
470	1	2322602	PIN, PIVOT, ZP
475	2	2327310	BUSHING – PIVOT PIN
480	2	2321702	WASHER – FLAT .375
485	2	2263011	E-RING .375
490	2	2322702	SPRING – LATCH PIN
495	1	2323410	SCREW, 8-32 X .75
500	7	2323408	SCREW, 8-32 X 2
510	1	2090651	LEADWIRE – 10 GA
525	1	2991273	COIL CORD, 45" / 48"
	1	2991271	COIL CORD, 54"
	1	2991274	COIL CORD, US2, 45" / 48"
	1	2991272	COIL CORD, US2, 54"
530	1	2320202	CAP, DUST, COIL CORD, NON-AP ONLY
535	1	2325641	DECAL, SIDEPLATE, LEFT
540	4	2323404	SCREW, 1/4-20
545	1	2321915	SIDEPLATE, LEFT
550	2	2323403	SCREW, 1/4-20 X .375 SS CRPH
555	1	2321925	SKID, LEFT
560	2	2323422	SCREW, 10-24 X .375

PARTS LIST

TERROVA 55

55 LBS THRUST - 12 VOLT - 45"/48"/54" SHAFT

ITEM	QTY	PART NUMBER	DESCRIPTION
565	2	2321700	WASHER, #10 SS
570	2	2322920	STAND-OFF, ALUM PLAIN
571	2	2323405	SCREW 1/4-20 X 1/2" MCH SS
575	1	2323915	RAMP -- 3 5/8" LEFT
580	4	2325115	PAD -- RUBBER REST
585	4	2321706	WASHER, #8
590	4	2323412	SCREW, 8-18 X .25
595	2	2324705	INSERT -- RAMP
600	1	2994202	ARM -- RELEASE, LEFT
605	2	2322710	SPRING -- EXTENSION
■	1	2770250	COVER, SPEED CONTROL WITH DECAL
620	1	2325650	DECAL, SPEED CONTROL
625	1	2320210	COVER -- SPEED CONTROL
630	1	2322901	STRAIN RELIEF
635	1	2324018	CONTROL BOARD, 12V STANDARD (1 PORT)
	1	2324022	CONTROL BOARD, 12V IPILLOT/LINK (2 PORT)
■		2884050	SWITCH -- REED REPAIR KIT
636	1	2320208	DUST PLUG
640	1	2320203	CAP, DUST, CONTROL BRD
645	2	2323406	SCREW, 10-24 X
650	1	2321315	HOLDER -- CONNECTOR
655	2	2332103	SCREW, 6-20 X .375
660	1	2074070	BATTERY METER, 12V
665	4	2323402	SCREW, 1/4-20 X .375
670	1	2321940	BRACKET, STRAIN RELIEF
675	1	2321310	STRAIN RELIEF, WIRE
680	1	2323405	SCREW, 1/4-20 X .5
685	2	2013100	SPEED NUT, .375
690	1	2320215	HANDLE, RELEASE COVER
695	1	2301700	BUSHING,
700	1	2322701	SPRING, RELEASE HANDLE
710	1	2320400	HANDLE, RELEASE FW
715	2	2322712	SPRING, RELEASE HANDLE
720	2	2322604	BUSHING, HANDLE
725	2	2332104	SCREW, 1/4-20 X .625
730	2	2323000	E-CLIP, 3/16, SS
735	1	2322606	PIN, FOLLOWER, HANDLE
740	1	2321905	BASE EXTRUSION, MACHINED
745	2	2322912	SPRING PIN,
750	1	2321950	BRACKET, SIDEPLATE
755	1	2323910	RAMP, 3 5/8" RIGHT
757	1	2994204	ARM, RELEASE, RIGHT
760	1	2321920	SKID, RIGHT
765	3	2301310	SCREW, 8-18 X .5
770	1	2320220	COVER, ACCESS, FW
775	1	2321910	SIDEPLATE, RIGHT
780	1	2325640	DECAL, SIDEPLATE, RIGHT
850	1	2994720	FOOT PEDAL
851	1	2326710	PLUG, FOOT PEDAL

ITEM	QTY	PART NUMBER	DESCRIPTION
860	1	2324400	PEDAL, HEEL-TOE
865	1	2322714	SPRING, MOMENTARY
870	2	2321300	CLAMP
875	4	2223430	SCREW, 8 X .75
880	1	2328600	FLEX FINGER
885	1	2323710	BUTTON, MOMENTARY, LEFT
900	1	2325660	DECAL, FOOT PEDAL
910	1	2320205	COVER, HEEL-TOE
915	1	2323725	BUTTON, AP
920	1	2323715	BUTTON, MOM/CON
925	1	2320100	KNOB, SPEED, FOOT PEDAL
930	2	2332103	SCREW, 6-20 X .375
935	1	2324021	CONTROL BOARD, FOOT PEDAL
936	1	2320207	DUST CAP
940	1	2322900	STRAIN RELIEF, FOOT PEDAL
945	1	2324500	BASE PLATE, FOOT PEDAL
950	10	2301310	SCREW, #8 X .5
955	1	2323730	BUTTON, STEER, LEFT
960	1	2323735	BUTTON, MOMENTARY
965	1	2323731	BUTTON, STEER, RIGHT
970	5	2322704	SPRING, FOOT PEDAL
975	1	2994859	BUMPER, BAG ASSY
980	2	2322706	SPRING, BARREL
985	2	2323420	SCREW, 8-18 X .375
990	2	2372100	SCREW, 8-18 X .625
■		1378131	PROPELLER KIT WW2
■		2994875	PROPELLER BAG ASSY
1000	1	2091160	PROPELLER WW2
1010	1	2092600	DRIVE PIN, SMALL
1015	1	2151726	WASHER, PROP, SMALL
1020	1	2053101	NUT, NYLOCK, PROP, SMALL
■		2994864	MOUNTING HARDWARE BAG ASSY
■		2888460	SEAL & O-RING KIT

■ THIS ITEM IS PART OF AN ASSEMBLY.

*THIS ITEM IS PART OF A KIT AND ONLY LISTED FOR VIEWING PURPOSES.